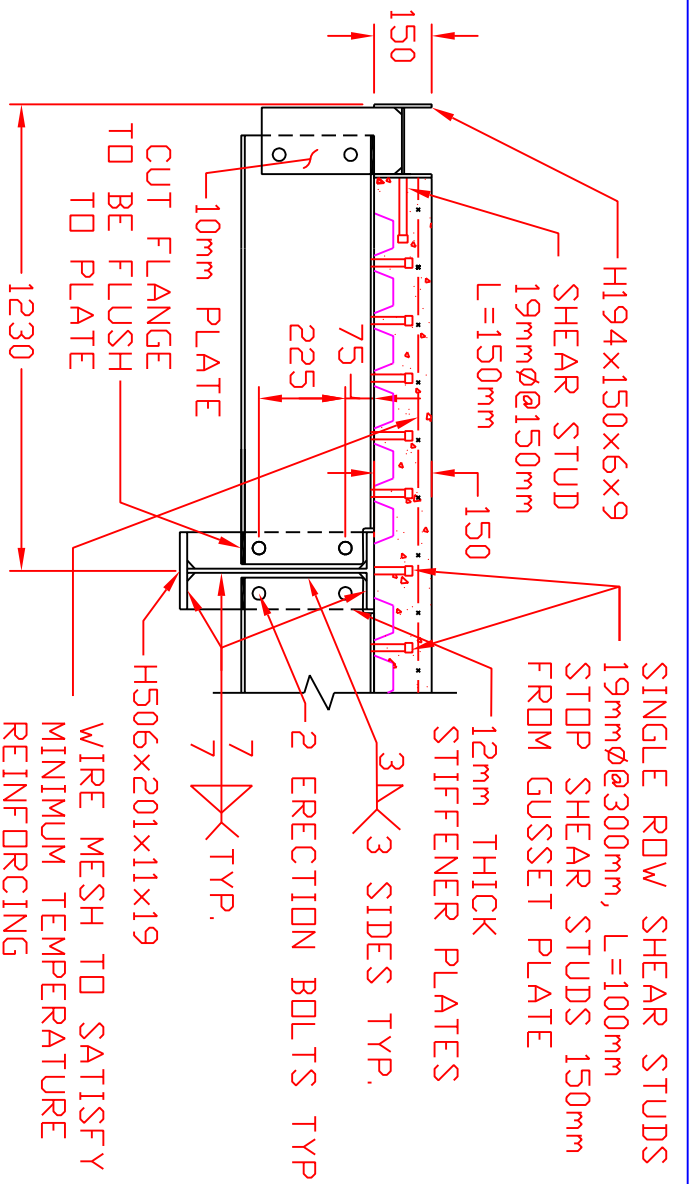


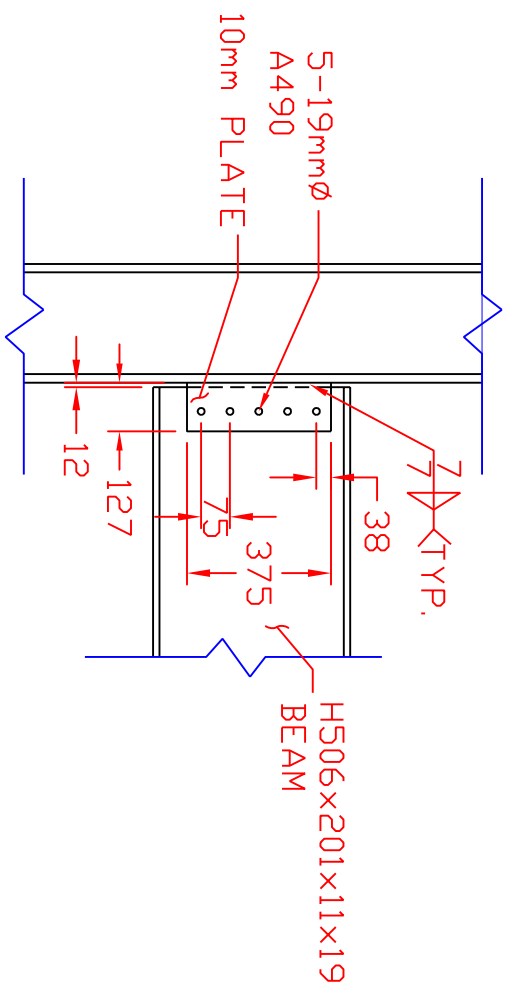
**A**  
SK-6

EDGE BEAM PLATE DETAIL  
SCALE: 1mm = 20mm



**B**  
SK-6

STIFFENER PLATE DETAIL  
SCALE: 1mm = 20mm



**C**  
SK-6

SHEAR TAB CONNECTION DETAIL  
SCALE: 1mm = 20mm

NOTES:  
 ALL PLATE STEEL A572 OR EQUIVALENT  
 ALL ROLLED SHAPES TO BE A992 OR EQUIVALENT  
 BRACE TO BE A500 B/C OR EQUIVALENT.  
 ALL WELDS TO SATISFY AISC DEMANDS CRITICAL AWS E718 OR EQUIVALENT

TCBF1 - TOMORROW'S CONCENTRIC BRACED FRAME 1	
NEES/SG NCREET BRACED FRAME TEST	
DRAWN BY: KAC	DATE: SEPTEMBER 7, 2007
DESIGNED BY: JAP	CONTACT: GROEDER@U.WASHINGTON.EDU
CHECKED BY: KAC	
DWC:	
<b>SK-6</b>	